

MAC TIP/WASTE TRAILER ADVANTAGES



Lengths up to 53' and 96" or 102" widths. Cubic capacities up to 156 yard and tapered design options for maximum cubic volume.

Moving Floors

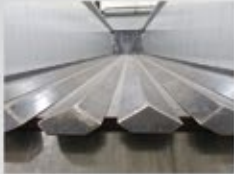
- The moving floor is predominately used for unloading bulk commodities such as waste, wood, agricultural products and recyclables with materials discharging via a 3" cylinder that is hydraulically operated. Proper wet kit instillation mounted on the truck is critical for optimal performance.

Unload Anything - Anywhere

- 3" cylinder drive can unload up to 35 tons and a 3.5" cylinder drive unit is rated to unload up to 50 tons and used for multi-axle and loads that are very dense. An amazing unloading time of 6-7 minutes is achieved.
- V-Slat or Drop Deck Moving Floor Designs are available
- Cross Bracing and Z-Beams supports Crossmembers and stabilizes the trailer preventing trailer twist.
- Brass Bushings in gate hinge with stainless pin
- Aluminum Air Tanks
- Standard Stainless Steel Hydraulic pipe.
- Standard 5 year Wheel-end package.



V-Slat Moving Floor



Drop Deck Moving Floor



Cross Bracing and Z-Beams supports Crossmembers



Aluminum Air Tanks



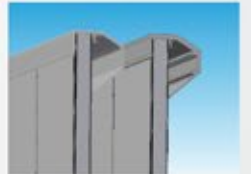
Tipper

- Fully welded Sheet & Post and MVP Smooth side Design and are unloaded via a tipping platform.
- Standard 1/4" Aluminum floor with an option 3/8" material for added wear and impact.
- No bow top rail which eliminates the need for center bar. Average weight for a 48' x 102" tipper trailer is an amazing 13,000-13,500 lbs. The tipper trailer does not have a moving floor system and in turn the truck **does not** require a wet kit.
- **Overall Weight Savings = Greater Payload**
- Typically used for longer hauls to maximize payload and increase profit.
- Standard 5 year Wheel-end package.

Fully welded Sheet & Post and MVP Smooth side Design



No bow top rail



Multi-Axle

- Full length fabricated Aluminum I-Beam frame for the most rigorous hauls, that is boxed in for the multi axle construction

Aluminum I-Beam frame



Experience Excellence



MAC TIP/WASTE TRAILER ADVANTAGES

ADVANTAGES FOR ALL:



• Offered in Sheet & Post Construction -

The Top rails are designed to have channels for the placement and positioning of side skin. The side sheet material is .165 5454 H34 aluminum alloy with the option of .190 and .250 for harsher applications. Additional upright posts that are extruded from 6061 T6 Aluminum can be added for increased side wall strength.



• Or Offered in MAC Vertical Panel - The

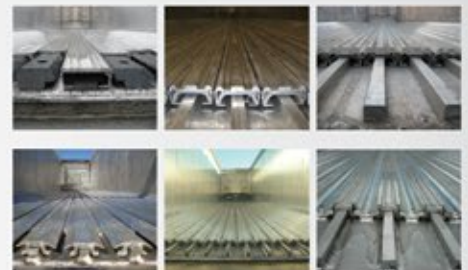
Deep structural 6061 T6 Aluminum extruded top rail is a "No Bow" design providing superior strength. The "MVP" wall panels incorporate a unique interfacing interlock, full height welds between the panels on the interior side of the trailer which provides a "Weldless Mirror Finish" exterior. Each panel is welded to the top and bottom rails for added wall strength and easy cleaning. The bottom rails hollow design provides a weather resistant channel for wiring of the side lights. MVP typically adds 6 cubic yards vs. the welded Sheet & Post.



• The side wall panels are 15 1/2" wide x 2 1/4" deep, 5 void extruded aluminum hollow core panels that are fully welded top to bottom on the interior wall of the trailer to help prevent material lodging into the joint and to provide added side wall strength. The fully polished, WELDLESS EXTERIOR offers a mirror finish for company imaging and ease of cleaning. A hollow designed extruded 6061 T6 aluminum bottom rail houses the lights and wiring for protection from the weather and road elements.



• **Galvanized MAC Spring Ride** with 1 year warranty or Hendrickson Air ride with 5 yr warranty. As an option, Movers can be equipped with Galvanized suspension hangers with stainless steel shims between the suspension hangers and all aluminum frame beams, air tanks and stainless steel hydraulic lines.



• **Keith Walking Floor/Aluminum Drive Frame** with 2 year warranty



• **JOST Galvanized Framing** with 10 year warranty. Reverse Mount Dolly Legs for stability and distributing load evenly in bottom rail.



• **Radius Design Bulkhead** for improved aerodynamics and the MAC Man Door provides safe and easy access into the trailer from the bulkhead.



• **Galvanized Steel subframe**



• **Grote Lights** with 10 year wiring harness warranty.

Experience Excellence

Dump/Transfer Trailer Division
1-800-795-8454

www.MACtrailer.com